



HIGH PERFORMANCE TEXTILES

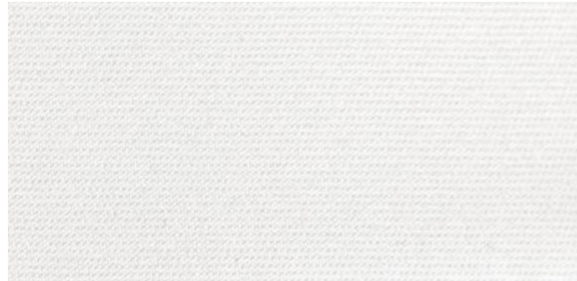
# HIGH PERFORMANCE TEXTILES

NAUTICALLY DESIGNED FOR EXTREME ENVIRONMENTS

*Tuuci's high performance exterior textiles are designed to endure nature's most extreme environments. This selection offers a range of dynamic colors, textures, and patterns, meticulously crafted in a variety of grades to enhance your outdoor shade experience and inspire you to live your best life outdoors.*



**Natural**  
MXT 9003



**Natural**  
CXT 8003

## **Marine MXT 9000-9600 Series** : PAGES 1-5

Perfect for commercial and residential use in both extreme and moderate environments. This versatile acrylic fabric series offers the greatest selection of colors, the longest warranty, and is available on most products. *Flat binding required with fishtail profile. Braid binding required with valance.*

## **Comfort CXT 8000 Series** : PAGES 1-4

This acrylic fabric is ideal for smaller parasols where the strength of marine grade fabric is not required. Also, this is the preferred option for cabana bench upholstery.

## **Premier PXT 10000 Series**

PAGE 7

The most durable and highest performing textile for continued extreme exposure while offering excellent water repellency and superior tensile strength. It is a standard canopy option for the Ocean Master MAX F-1.

## **Premier PXT 10000-92 Series**

PAGE 7

This series presents the unique balance of extreme strength and open weave construction, making it ideal for high wind applications where 100% shade and water resistance isn't required. This series offers 4% open weave ratio. It is a standard canopy option for the Ocean Master MAX F-1 and is recommended for the Stingray.

## **Premier PXT 10000-86 Series**

PAGE 7

This series presents the unique balance of extreme strength and open weave construction, making it ideal for high wind applications where 100% shade and water resistance isn't required. This series offers 14% open weave ratio. It is a standard canopy option for the Ocean Master MAX F-1 and is recommended for the Stingray.

## **Marine MXT 9800 Series**

PAGE 7

This two-ply polyester fabric with resin coating comes standard with a two-toned canopy, where the underside is white and the colored resin coating is on the top. Commonly used on the Ocean Master M1 Manta.

## **Marine MXT 9700 Series**

PAGE 6

The polyester construction of the Marine MXT 9700 Series maintains a unique balance of strength to weight ratio and has been specifically selected for use with the Ocean Master MEGA MAX but is available on many other collections too.

## **Light LXT 7700 Series**

PAGE 6

A lighter alternative to the MXT 9700 Series, the woven polyester construction is ideal for smaller parasols.

# Heathers & Textures

Sophisticated textures add depth to outdoor projects.

\*No flat binding

† No braid binding

Swatches shown in MXT



**Sugar**  
MXT 9097



**Fossil**  
MXT 9083†



**Sand**  
MXT 9093\*†



**Alabaster**  
MXT 9080†



**Pumice**  
MXT 9091\*†



**Nantucket Dune**  
MXT 9088†



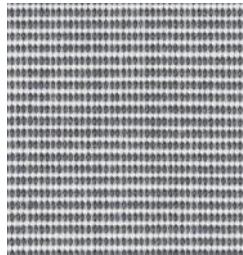
**Mojave**  
MXT 9086†



**Moraine**  
MXT 9087†



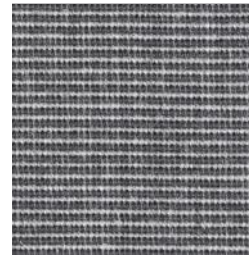
**Stone**  
MXT 9096†



**Shale Rib**  
MXT 9095\*†



**Shadow**  
MXT 9094†



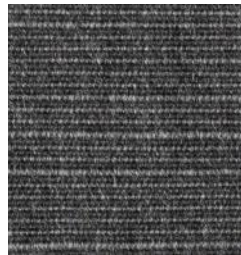
**Pewter Rib**  
MXT 9090\*†



**Stingray**  
MXT 9050



**Charcoal Rib**  
MXT 9082



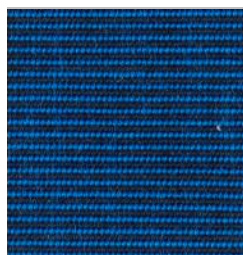
**Ash Gray**  
MXT 9081†



**Onyx**  
MXT 9089



**Glacier**  
MXT 9084



**Royal Blue Rib**  
MXT 9092



**Woodland**  
MXT 9098  
CXT 8098



**Hemlock Rib**  
MXT 9085

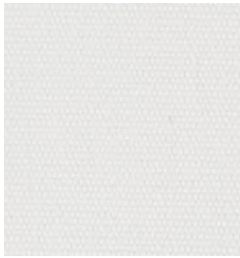
# Land & Beach

These timeless neutrals in warm and cool shades integrate into any natural environment.

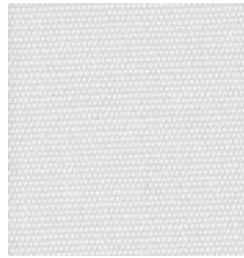
\*No flat binding

† No braid binding

Swatches shown in MXT



**Snow**  
MXT 9105  
CXT 8105



**Natural**  
MXT 9003  
CXT 8003



**Scallop**  
MXT 9004



**Malt**  
MXT 9102†



**Eggshell**  
MXT 9101



**Crème**  
MXT 9100



**Scone**  
MXT 9104



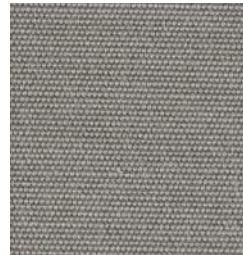
**Sahara**  
MXT 9051



**Beeswax**  
MXT 9099  
CXT 8099



**Ecru**  
MXT 9005



**Thunder**  
MXT 9107



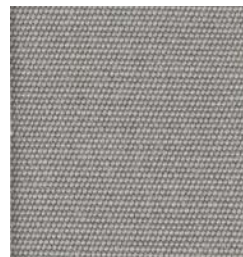
**Truffle**  
MXT 9010  
CXT 8010



**Platinum**  
MXT 9007



**Pearl**  
MXT 9103†



**Dolphin**  
MXT 9008



**Anchor Gray**  
MXT 9009  
CXT 8009



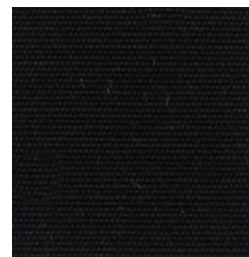
**Cocoa Bean**  
MXT 9045  
CXT 8045



**Espresso**  
MXT 9046



**Tempest**  
MXT 9106†



**Black**  
MXT 9006  
CXT 8006

# Sea & Sky

Soothing greens and blues invoke calming waters and tranquil horizons.

\*No flat binding †No braid binding

Swatches shown in MXT



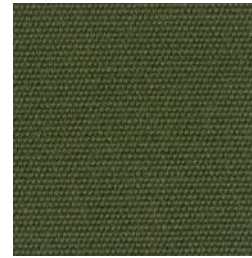
**Lichen**  
MXT 9113†



**Sprout**  
MXT 9299



**Sage**  
MXT 9041



**Moss**  
MXT 9296\*



**Sea Mist**  
MXT 9298



**Turks**  
MXT 9015  
CXT 8015



**Curacao**  
MXT 9040



**Bahama**  
MXT 9108



**Heaven**  
MXT 9112†



**Harbour**  
MXT 9111



**Cerulean**  
MXT 9109  
CXT 8109



**Blue Stone**  
MXT 9011  
CXT 8011



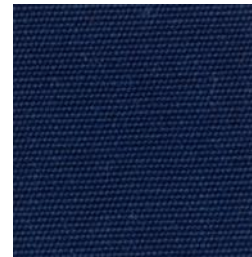
**French Lilac**  
MXT 9110†



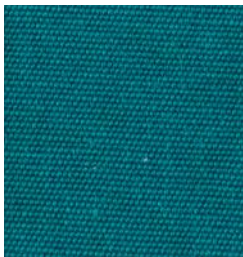
**Portofino**  
MXT 9043  
CXT 8043



**Regatta Blue**  
MXT 9297  
CXT 8297



**Compass Blue**  
MXT 9012



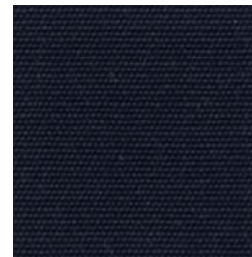
**Abaco**  
MXT 9049



**Evergreen**  
MXT 9047  
CXT 8047



**Admiral Navy**  
MXT 9044



**Midnight Blue**  
MXT 9114  
CXT 8114

# Sun & Flowers

Sunny, warm colors and cool shades that will brighten up any patio, terrace, or outdoor setting.

\*No flat binding † No braid binding

Swatches shown in MXT



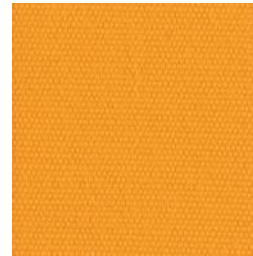
**Canary**  
MXT 9303†



**Sunburst**  
MXT 9016  
CXT 8016



**Marigold**  
MXT 9310\*



**Nectarine**  
MXT 9304†



**Grapefruit**  
MXT 9307†



**Begonia**  
MXT 9301



**Apricot**  
MXT 9053  
CXT 8053



**Madrona**  
MXT 9309  
CXT 8309



**Peony**  
MXT 9311\*



**Dragonfruit**  
MXT 9302  
CXT 8302



**Cherry**  
MXT 9013  
CXT 8013



**Scarlet**  
MXT 9014  
CXT 8014



**Flame**  
MXT 9306\*†



**Chili**  
MXT 9052  
CXT 8052



**Cabernet**  
MXT 9042  
CXT 8042



**Eggplant**  
MXT 9305†



**Violet**  
MXT 9312†



**Lapis**  
MXT 9308



**Indigo**  
MXT 9048



**Amethyst**  
MXT 9300\*†

# Classic Stripes

From the French Riviera to Miami Beach, these classic stripes check all the boxes for the flawless beach palette.



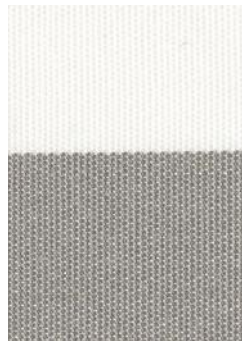
**Poppy Red**  
MXT 9319



**Sun Yellow**  
MXT 9320



**Bright Orange**  
MXT 9314



**Cloud Grey**  
MXT 9315



**Alpine**  
MXT 9313



**Royal Blue**  
MXT 9074



**Marina Blue**  
MXT 9318



**Dark Navy**  
MXT 9317

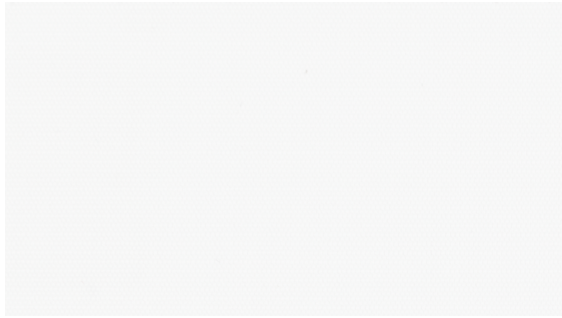


**Coal Black**  
MXT 9316

# Horizons & Terrain

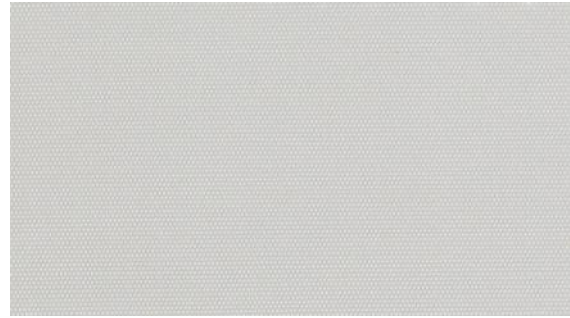
A well balanced neutral palette grounded in the colors of the earth.

Swatches shown in MXT unless otherwise noted.



**Whitecap**

MXT 9700  
LXT 7700



**Whisper Gray**

MXT 9707  
LXT 7707 (shown)



**Moonstone**

MXT 9701



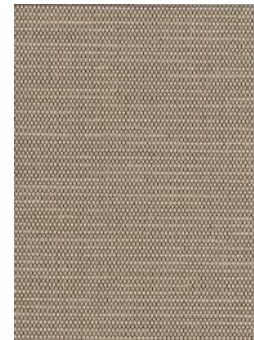
**Barley**

MXT 9702



**Sienna**

MXT 9706  
LXT 7706



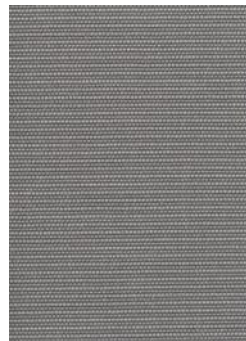
**Almond**

MXT 9703



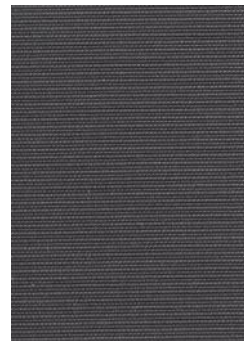
**Georgetown**

MXT 9708



**Squall**

MXT 9709  
LXT 7709



**Meteorite**

MXT 9710



**Basalt**

MXT 9714  
LXT 7714



**Daffodil**

MXT 9705



**Abyss**

MXT 9713  
LXT 7713



**Deep Emerald**

MXT 9711  
LXT 7711

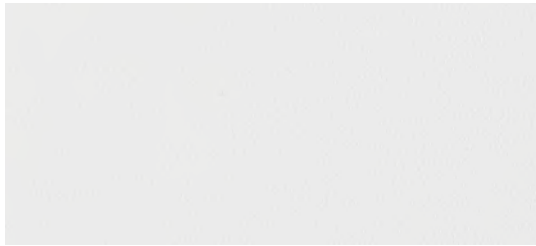


**Earth**

MXT 9712

Where technical design complements the relentless elements of the nautical world.

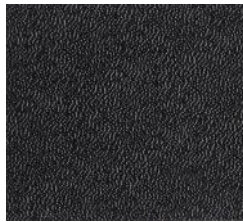
## PREMIER PXT 10000 SERIES



**White Sail**  
PXT 10001



**Nightfall**  
PXT 10002



**Obsidian**  
PXT 10003

## MARINE MXT 9800 SERIES



**Arctic Silver**  
MXT 9800



**Comet**  
MXT 9801



**Black Pearl**  
MXT 9802

## PREMIER PXT 10000-92 & PXT 10000-86 SERIES

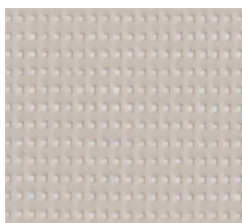
*Swatches shown in PXT 10000-86 series unless otherwise noted.*



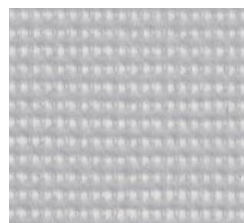
**Spinnaker**  
PXT 10004-86  
PXT 10004-92



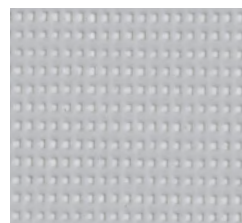
**Gateway/Spinnaker**  
PXT 10014-86  
PXT 10014-92 (shown)



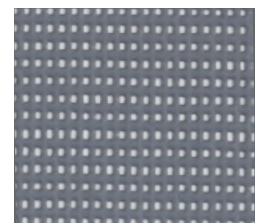
**Haze**  
PXT 10005-86  
PXT 10005-92



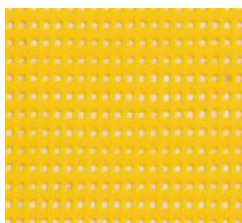
**Gateway**  
PXT 10006-86  
PXT 10006-92



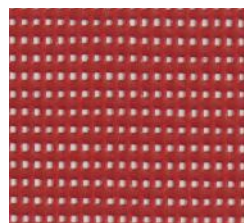
**Grayhound**  
PXT 10007-86  
PXT 10007-92



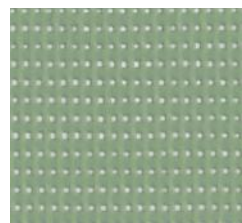
**Hammerhead**  
PXT 10008-86  
PXT 10008-92



**Lemon**  
PXT 10010-86  
PXT 10010-92



**Crimson**  
PXT 10011-86  
PXT 10011-92



**Pear**  
PXT 10012-86  
PXT 10012-92



**Raven**  
PXT 10013-86  
PXT 10013-92

## CANOPY ENHANCEMENT OPTIONS



Three piece alternating panels with braid binding and double sided canopy



Classic roman valance with braid binding



Modern roman valance with braid binding



Double sided canopy with contrasting flat binding on canopy edge and vent



Scalloped valance with braid binding and cord fringe



Fishtail profile with flat braid binding and accent border



Straight valance with braid binding



Contrasting flat binding, pockets, and wind vent

## HIGH PERFORMANCE TEXTILES

Tuuci textiles mirror the superior quality and performance expected from our parasols and shade structures. Every stitch is meticulously crafted by our skilled marine fabrication team using specialized reinforcement techniques to ensure a long-lasting shade experience.



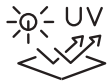
### WATER RESISTANT

Our Premier PXT and Marine MXT fabrics offer engineered moisture resistance that endures for years.



### MOLD & MILDEW RESISTANT

These fabrics inherently resist the growth of mold and mildew. To keep your canopies looking clean, brush off dirt and debris regularly.



### LASTING COLOR

Feel confident in choosing bold colors that resist fading with built in UV resistant technology.



### DURABILITY

Our fabrics are built to perform in demanding outdoor conditions.



### LEADING WARRANTY

Our 10 year limited warranty offers confidence in construction, quality and performance for our premier and marine grade fabrics.



### RESPONSIBLE DESIGN

Engineered for an extended useful life and composed of recyclable materials.



### HAND TAILORED CANOPY

Each canopy is carefully cut and sewn by our team of expert tailors to create our signature crisp fitting canopies designed to perform.



### SUPERIOR MATERIALS

High performance marine engineering goes into every seam, every pocket, and every grommet we use.

## CARE & MAINTENANCE

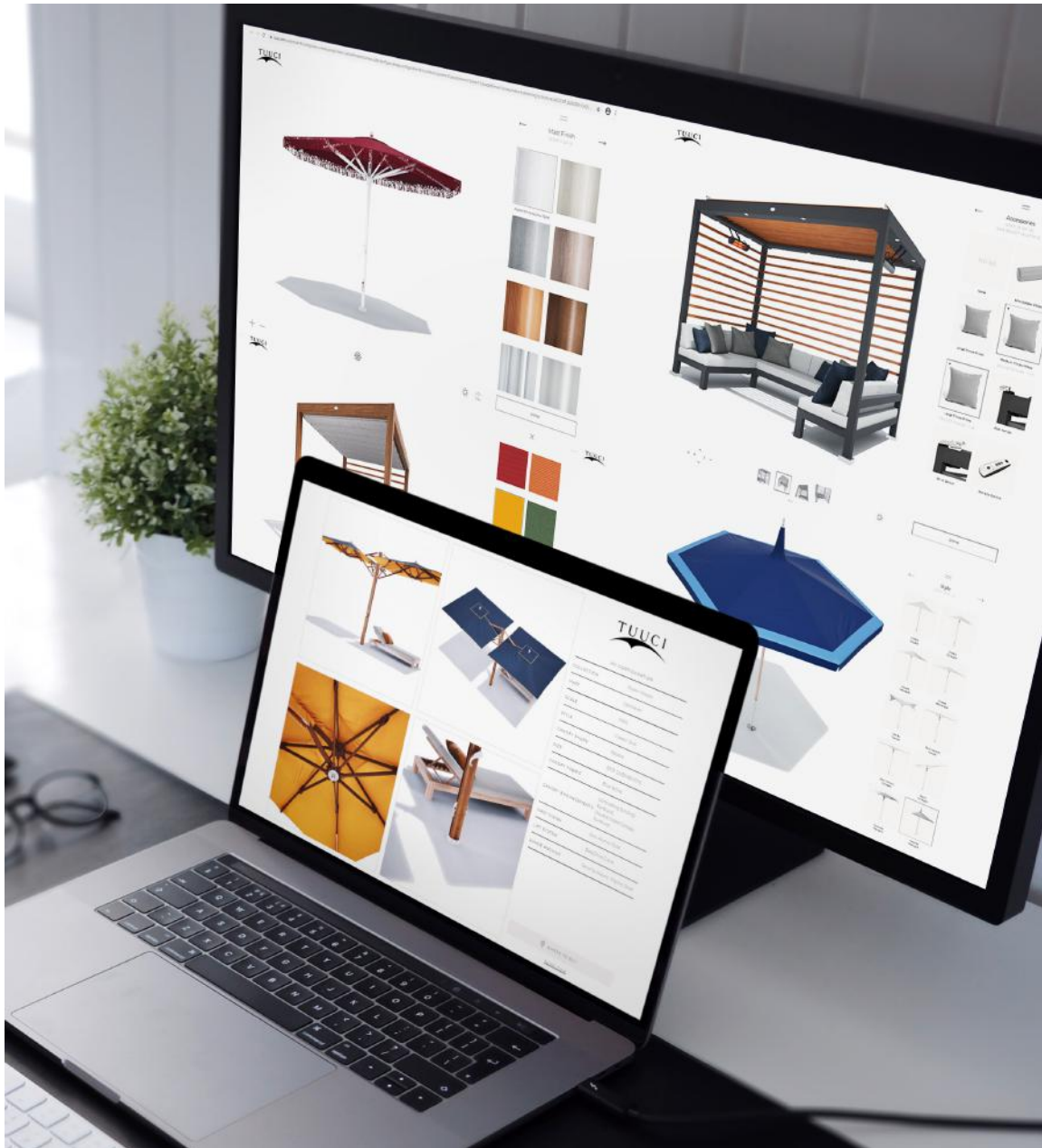
Tuuci's High Performance Textile parasol canopies employ the most durable and state of the art outdoor fabrics and thread, including proven high-performance, UV stable materials. Proper care and maintenance are important to extend the serviceable life of all Tuuci products.

Learn more at [tuuci.com/resources/care-maintenance](https://tuuci.com/resources/care-maintenance)

## WARRANTY

Tuuci constructs its shade structures with the finest materials available. We test our products in extreme weather environments to ensure stability, durability, and years of worry-free service. In addition, Tuuci personnel carefully follow specific quality control procedures and inspect each product to ensure our shade platforms exceed your expectations and provide a shade experience like no other in the world.

Learn more at [tuuci.com/resources/warranty](https://tuuci.com/resources/warranty)



## SHADE STUDIO

Seeing is understanding, and the Tuuci.com virtual Shade Studio converts parasol and cabana specifications into dynamic client-ready renderings. Customizations and enhancements are viewed in real time to visually demonstrate options and facilitate decision making. This industry-first product visualizer uses sophisticated gaming technology to provide a robust 3D experience and bring ideas to life.

Learn more at [tuuci.com/shadestudio](https://tuuci.com/shadestudio)



M32

9990-X-17620

9990-X-17630

661

573



**GLOBAL MISSION CONTROL**

MIAMI, USA

+1.305.634.5116

**EUROPE SHADE POST**

OISTERWIJK, THE NETHERLANDS

+31.13.522.0471

**ASIA-PACIFIC SHADE POST**

HO CHI MINH CITY, VIETNAM

+84.274.379.4714

**TUUCI.COM**

Tuuci® is a registered trademark of the U.S. Patent and Trademark Office.

0810F1